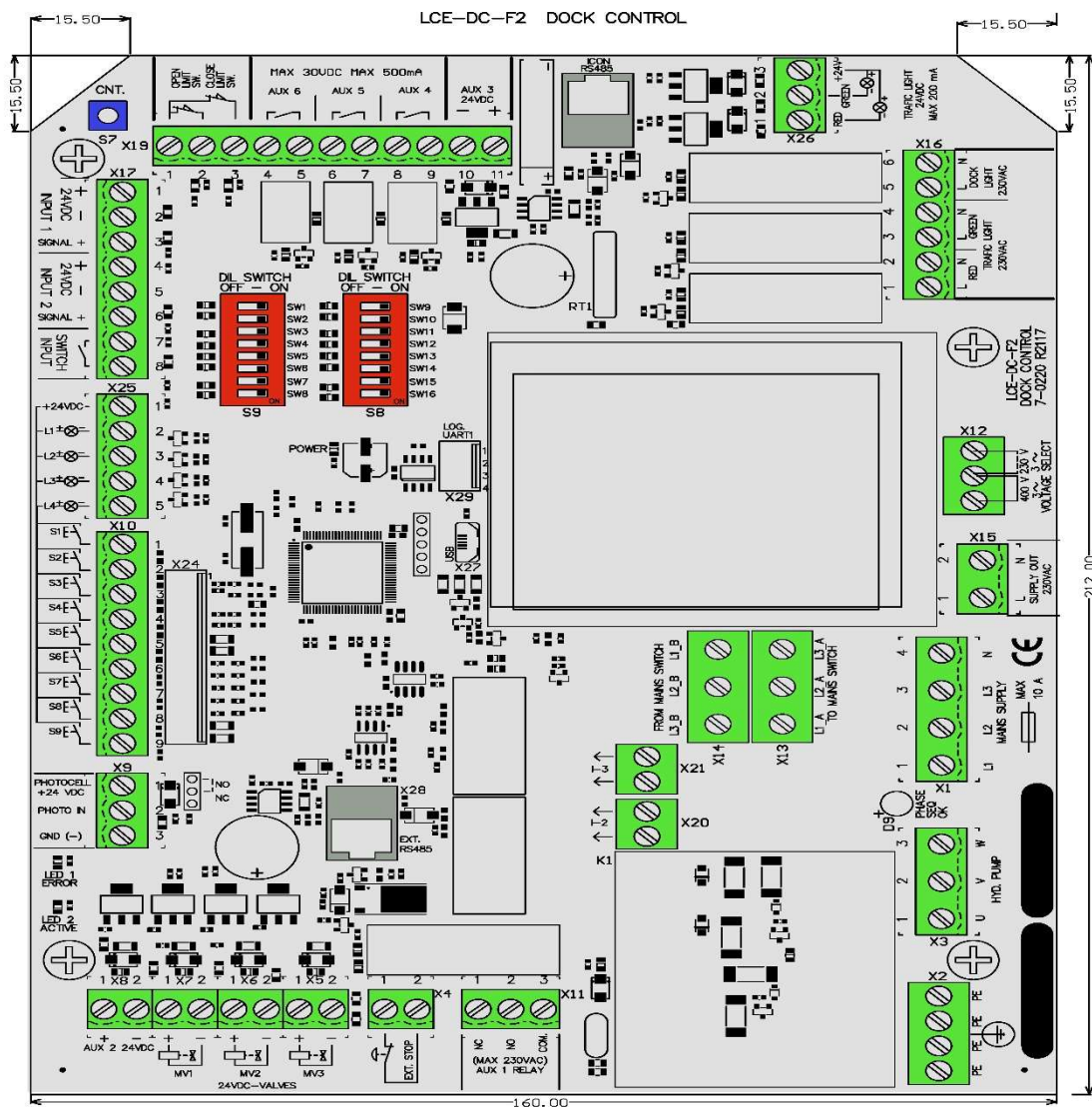
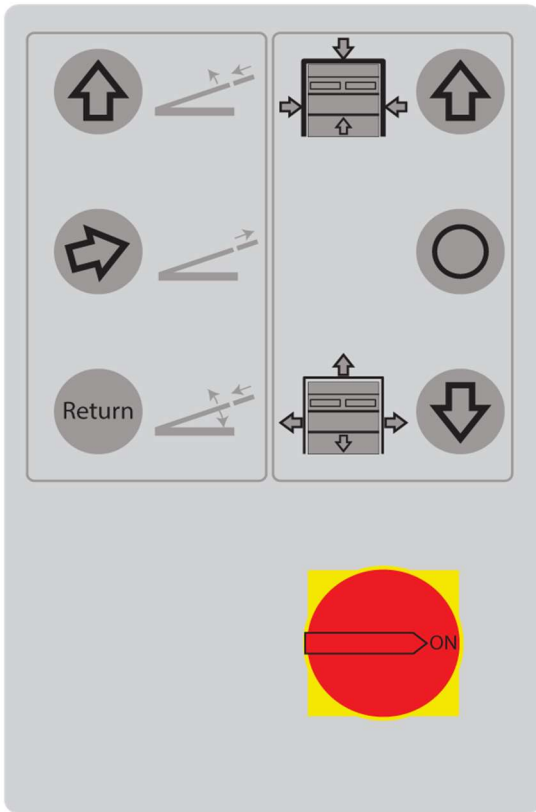


Features:

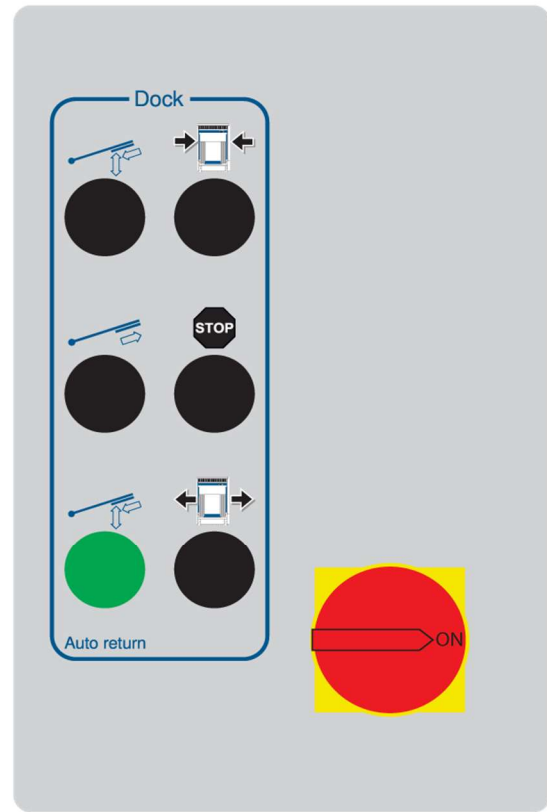
- Electronic motor protection (current monitoring).
- Self learning motor size – from 0.75 to 1.5 kW.
- Control for telescopic lip and swing lip.
- Automatic detection of swing lip top position.
- On-board motor contactor up to 1.5 kW.
- Selectable NO and NC of Photo or micro switch.
- Solid state MOSFET transistor for driving valves.
- OPEN and CLOSE limits input for door interface.
- Door interface outputs for OPEN, CLOSE and STOP.
- 3 valves outputs.
- Green LED for Power.
- Yellow LED on 24VDC output.
- Yellow LED on valves outputs.
- Yellow LED on motor contactor.
- Red LED for indicating error codes.
- Green LED for correct phase sequence.
- 30VA or 47VA transformer.
- Transformer protected by multifuse.
- Mains voltage select, 230-400 VAC.
- 16-pole DIL SW functions setup.
- 7 Pushbutton inputs.
- 2 LED lid lamps output.
- AUX relay output. (Optional)
- 2 AUX 24VDC outputs.
- 230 VAC Dock Light output.
- 2 x 230VAC outputs for green and red traffic lights.
- Connector for optional membrane keypad.
- Cycle counter readout on 2 LEDs.
- Switch input for e.g. key switch.
- 2 x 24VDC signal input for sensors like e.g. wheel chock.
- OEM design.
- Patent pending.



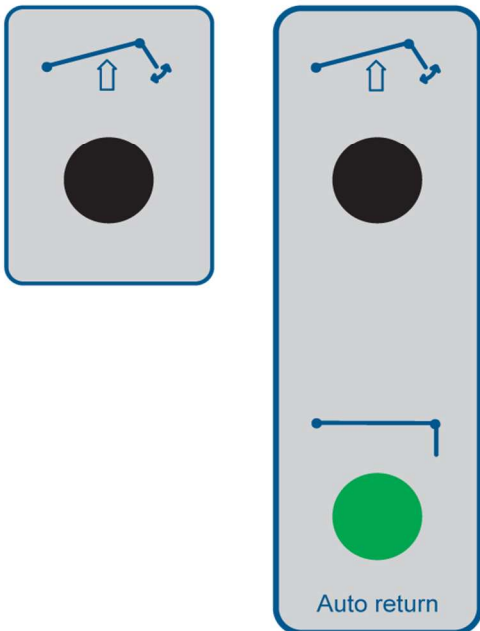
## Membrane switch



## Push button



## Swing Lip



## Tel. Lip

