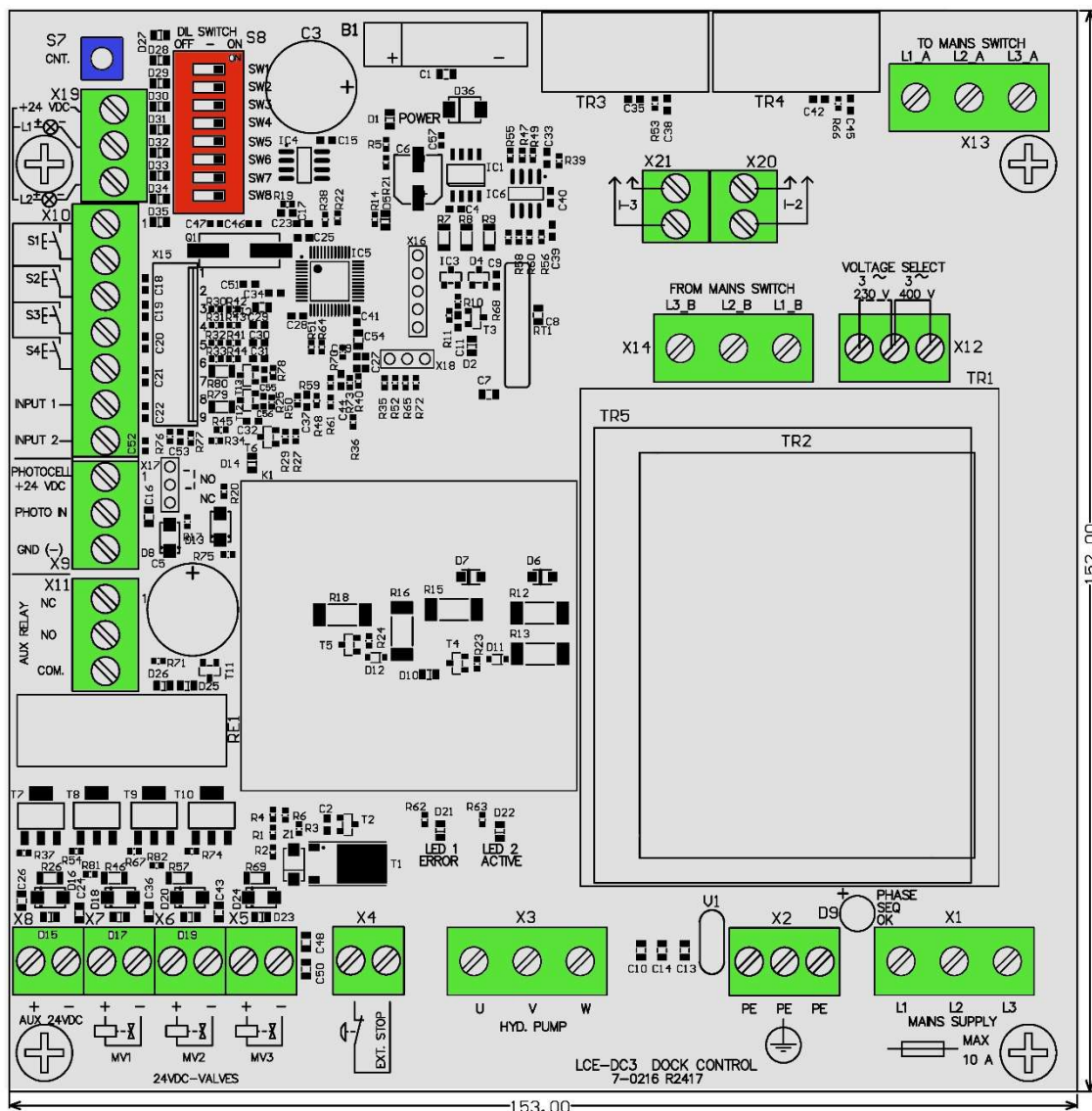


LCE-DC3 Dock Leveler Controller

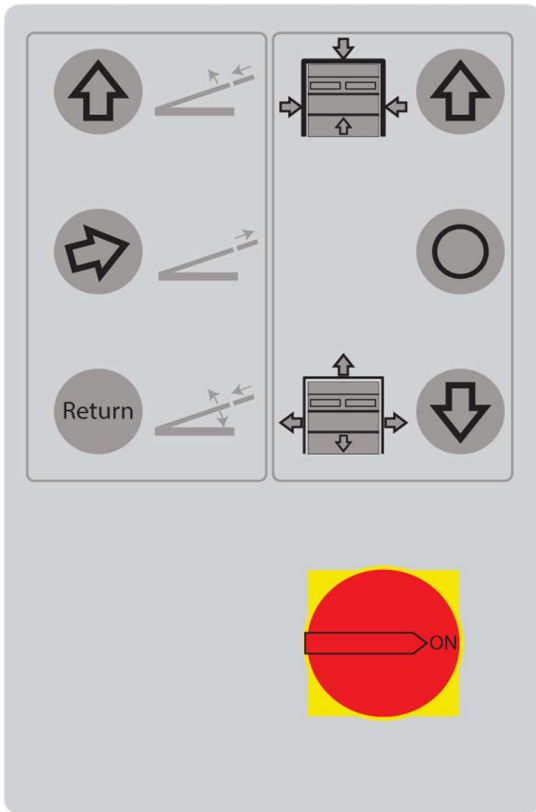
Features:

- Electronic motor protection (current monitoring).
- Self learning motor size – from 0.75 to 1.5 kW.
- Automatic detection of swing lip top position.
- On-board motor contactor up to 1.5 kW.
- Selectable NO and NC of Photo or micro switch.
- Solid state MOSFET transistors for driving valves.
- Green LED for Power.
- Green LED for correct phase sequence.
- Yellow LED on valves outputs.
- Yellow LED on motor contactor.
- Red LED for indicating error codes.
- Transformer protected by multifuse.
- 23VA, 30VA or 47VA transformer.
- Mains voltage select 230 – 400 VAC.
- 8-pole DIL SW functions setup.
- Up to 6 pushbutton inputs.
- 2 LED lid lamps output.
- AUX relay output (optional).
- AUX 24 VDC output (optional).
- LED on 24VDC output.
- Up to 3 valves outputs.
- Connector for optional membrane keypad.
- Cycle counter readout on 2 LEDs.
- OEM Design.
- Patent pending.

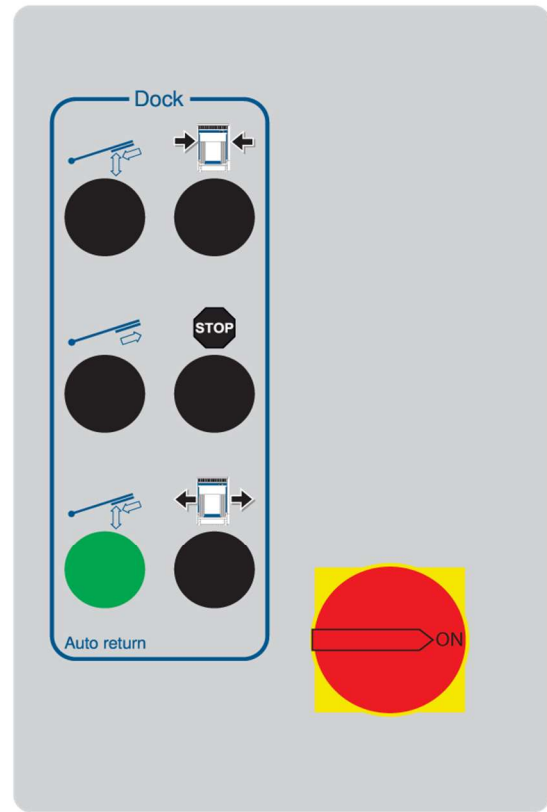
7-0216-R2417



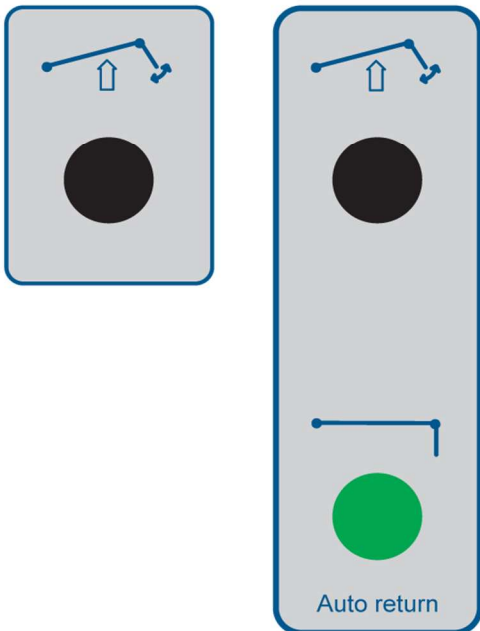
Membrane switch



Push button



Swing Lip



Tel. Lip

