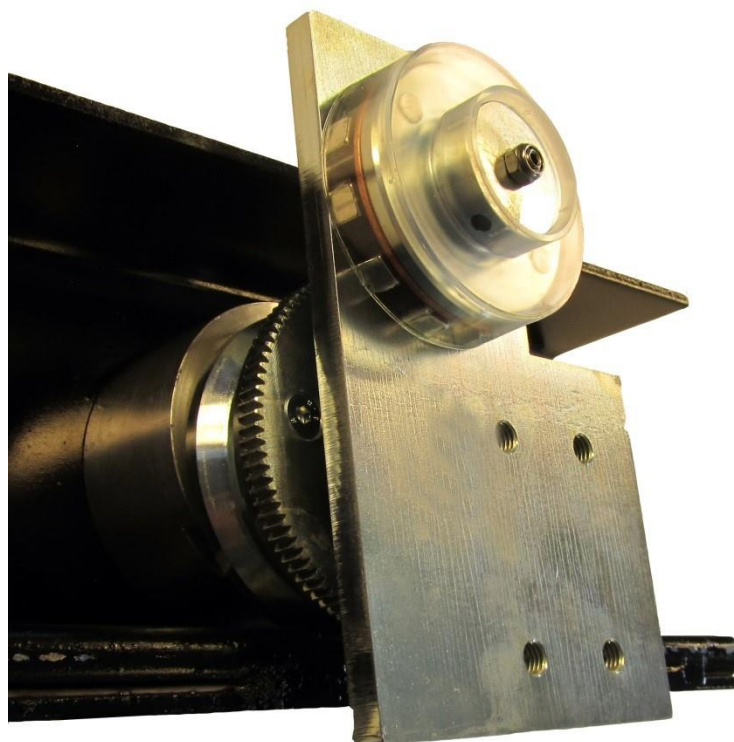


Design protected



DALMATIC EDDY CURRENT BRAKE

TYPE JE5-26-JKH

OPERATING DESCRIPTION

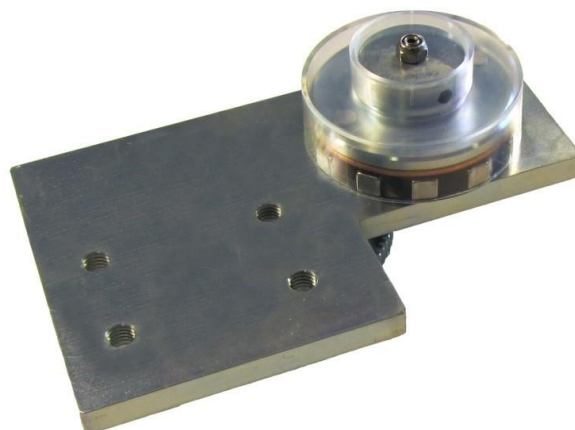
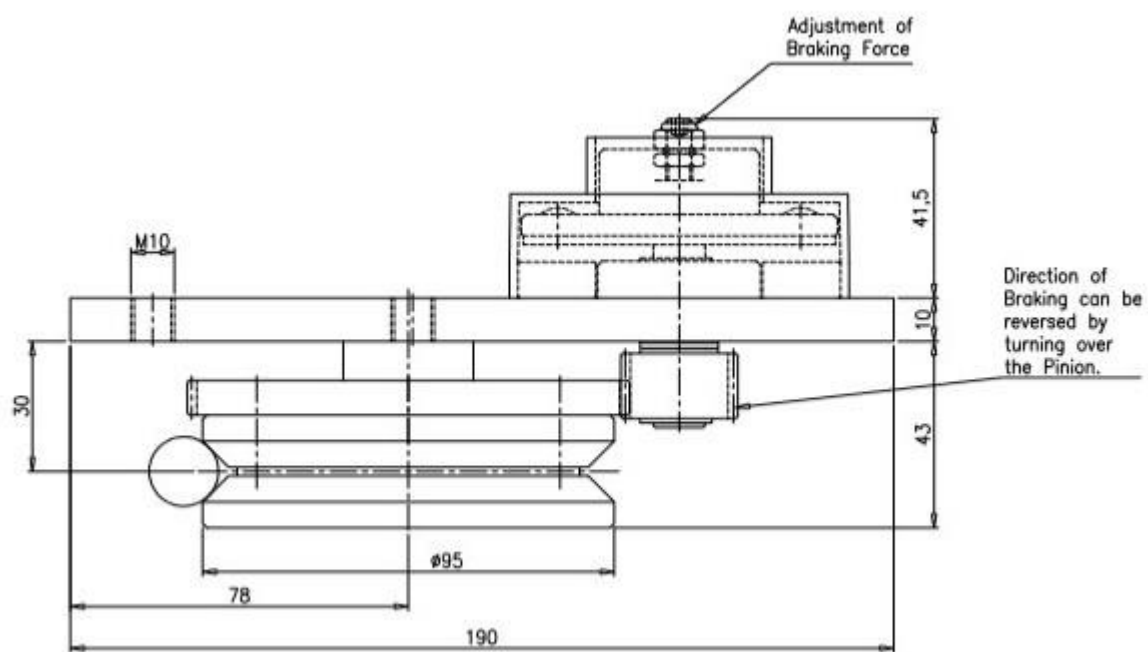
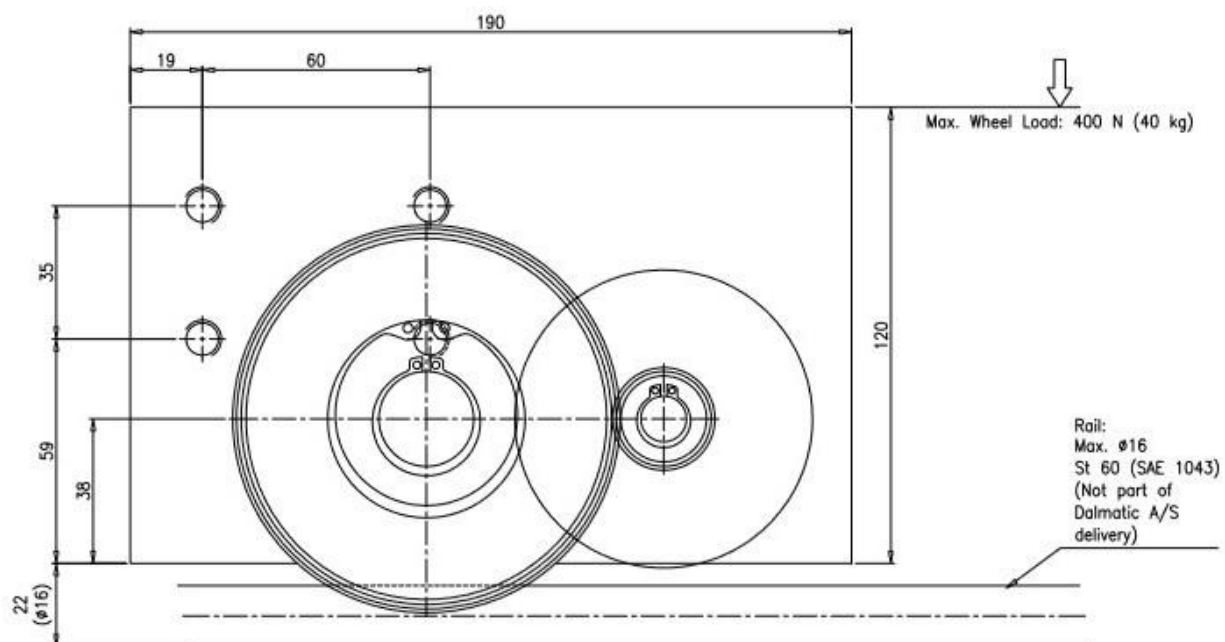
The Fire Roller Gate can be held open by an electric magnet.
By signal from the fire alarm or by power failure the magnet is disconnected,
and the gate closes by a counter weight or similar.

The Eddy Current Brake, limits the closing speed.
The built-in freewheeling disconnects the brake when the door opens.

As the Eddy Current Brake works by permanent magnets
and not by friction, the brake capability will never wear out.

Item no: 90000973

DIMENSIONS



Item no: 90000973

DALMATIC A/S LÆGÅRDSVEJ 9 DK 8520 LYSTRUP PHONE +45 70 23 16 66 WWW.DALMATIC.COM